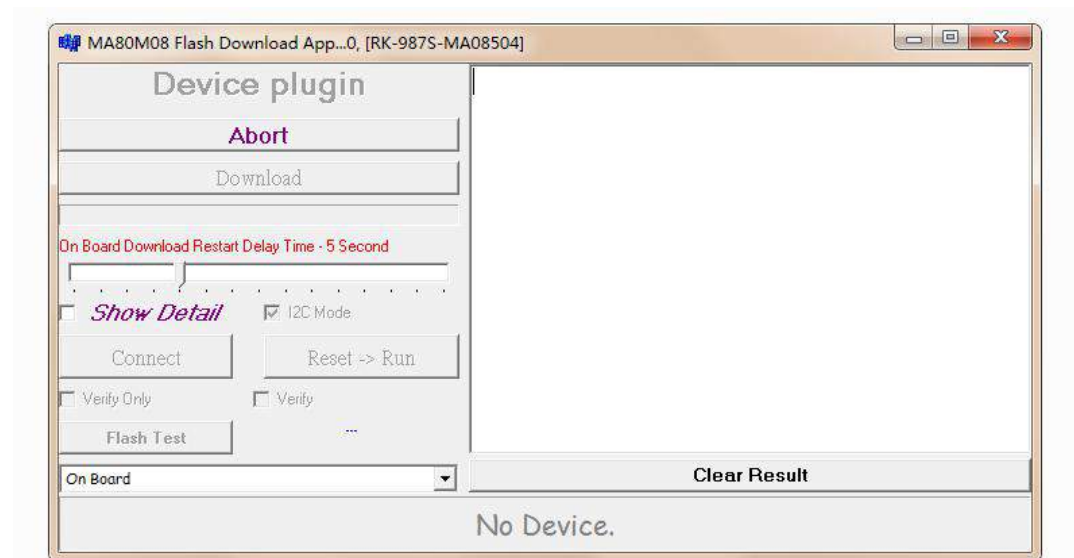
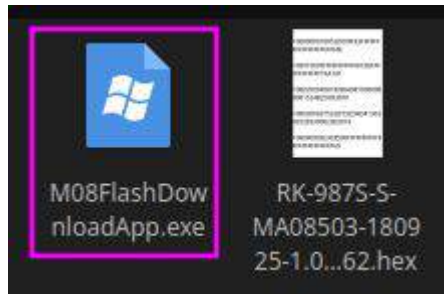


Wireless Connection Solution

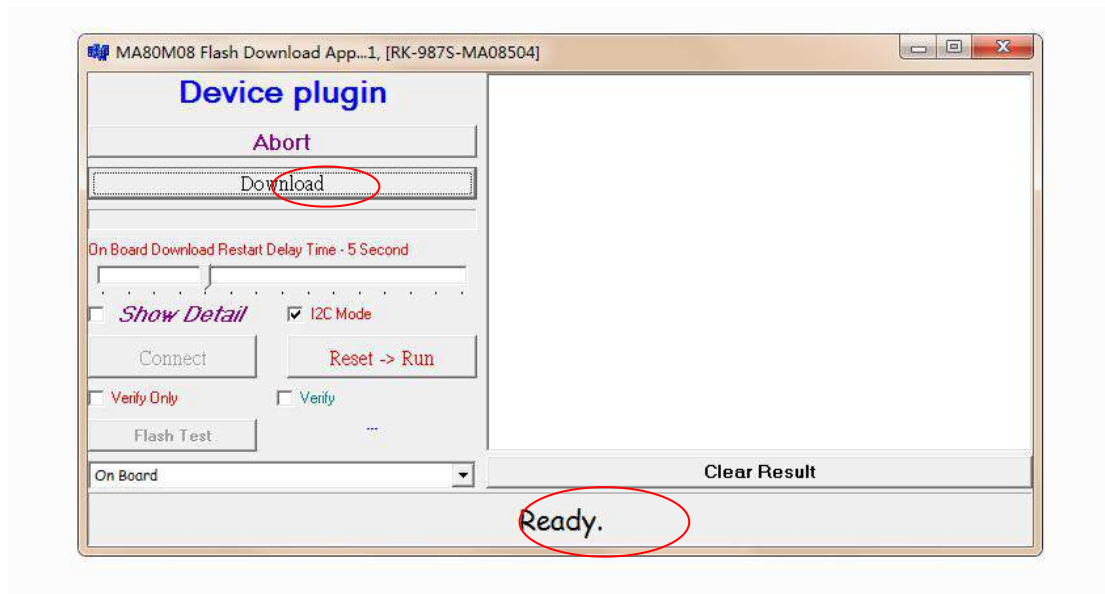
Download **Firmware** from Specifications Table or Google Drive:

<https://drive.google.com/drive/folders/1LnUcbEoWmSvrmWnqLKFJeOpNbRBHug14>

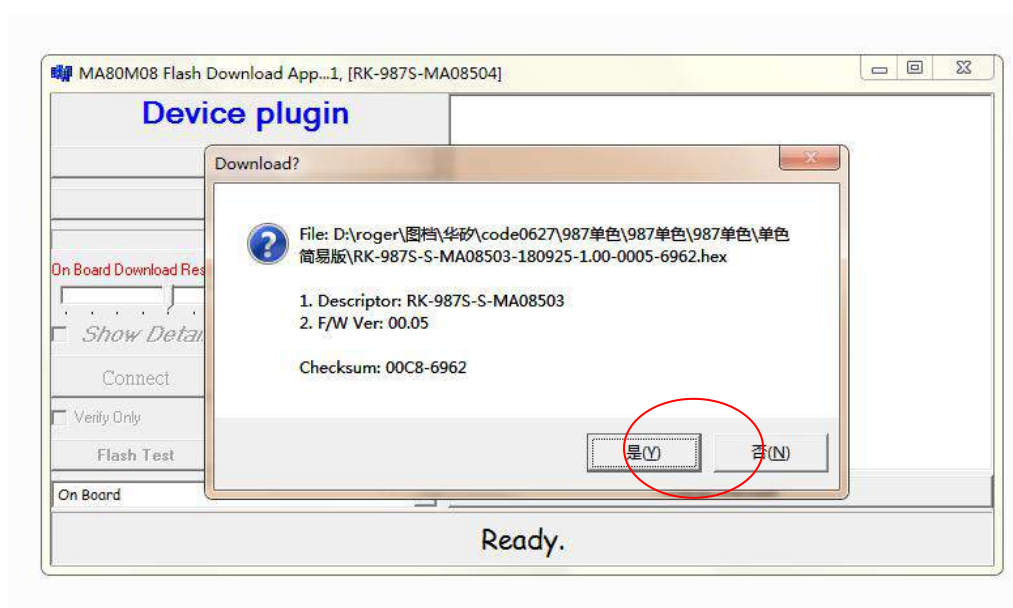
1. OPEN M08FlashDownloadApp.exe



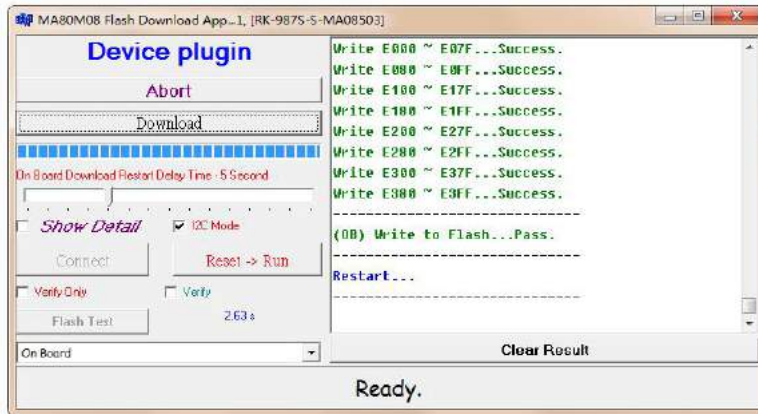
2. Connect the keyboard to the computer using the Type-C data cable, Waiting "**No Device**" change to "**Ready**", Then Click Download.



3. Select firmware **RK-987S-S-MA08503-180925-1.00-0005-6962.hex**, then click open
4. A query window pops up, click **YES**



5. Waiting for flash, when flashed the prompt is ready to appear again



6. Updated finish, close this software, The keyboard will be able to use.

Receiver Connection Solution

Step 1: Unplug the receiver, and make sure the USB cable is not connected either.

Step 2: Press FN+P, and the right-most indicator light will flash.

Step 3: Plug the new receiver. Windows will install the driver automatically, and identify the receiver, and then the indicator light will extinguish.

Step 4: Now the keyboard can work properly. If the keyboard still doesn't work, you can turn off the on-off control and restart the keyboard.

Contact us freely: service@velocifiretech.com